

puf5

PRESENTATIONS SPECIAL SESSION 5

SPECIAL SESSION 5: Informal settlements upgrading - evidence-based interventions

Host

Sponsors and Co-organizers



UN HABITAT
FOR A BETTER URBAN FUTURE

 **MONASH University**



SPECIAL SESSION 5:

Informal settlements upgrading - evidence-based interventions

Day 2 (2 July, 2019. Nadi, Republic of Fiji).

Organized by: Monash University - Revitalising Informal Settlements and their Environments (RISE) and United Nations Human Settlements Program (UN-Habitat)

Speakers:

- Mr. Alexei Trundle, PhD Candidate, University of Melbourne
- Ms. Doris Susau, Programs Director-Pacific, Live and Learn Fiji
- Mr. Emrah Engindeniz, Regional Programme Advisor Slum Upgrading Unit, Housing and Slum Upgrading Branch, UN-Habitat
- Ms. Mere Naulmatua, National Urban Planner, Asian Development Bank
- Mr. Buddley Ronnie, USec, Technical, Solomon Islands
- Ms Julie Boulton, Program Manager, Monash Sustainable Development Institute
- Mr. Matthew French, Program Manager, RISE program

Informal settlement upgrading is challenging, requiring action across many areas including land tenure, finance, sanitation, water supply, housing, access, participation, climate change resilience and more. No single program, project or study to date has attempted to address all these concerns.

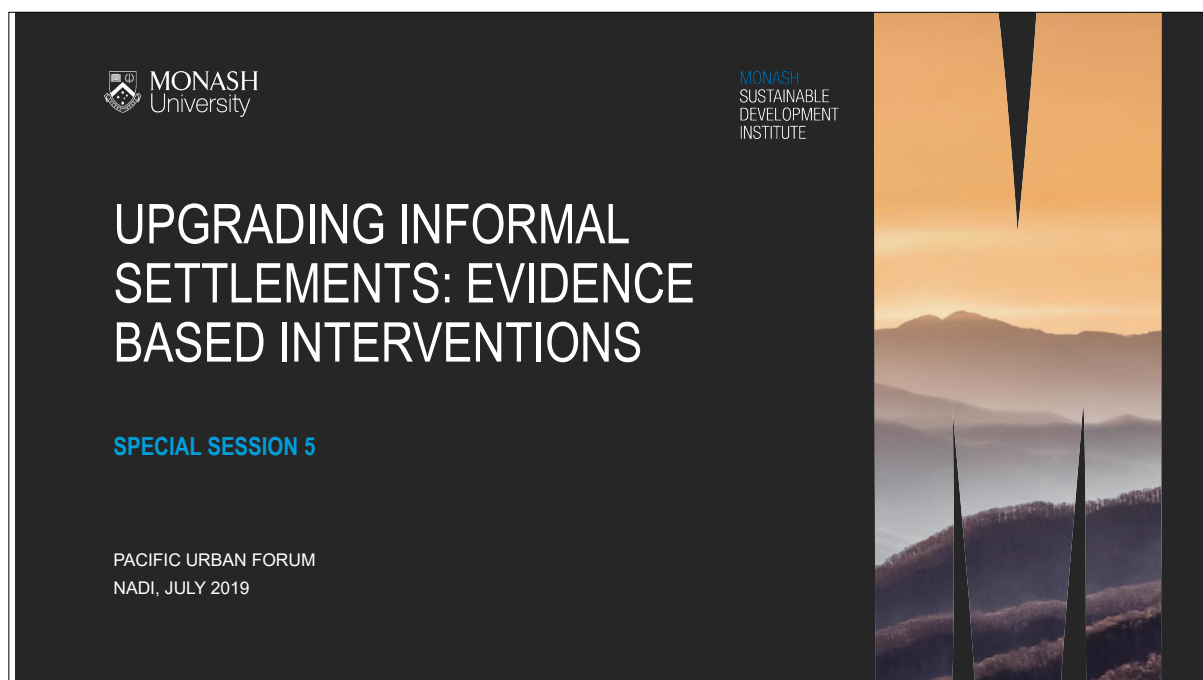
In recognition of the complexity of informal settlement upgrading, this session invited contributions from multiple voices and experiences. The session aimed to bring to light the multiple facets of successful upgrading interventions, and explore the need for holistic, integrated solutions.

Rather than a single keynote presentation, 8 speakers were invited to share their experiences in a 'pecha kucha' format. Presentations were followed by a plenary discussion with participants to explore the role of evidence in successful integrated interventions.

In their 'pecha kucha' time, speakers briefly explored what their study or project set out to do, the 'Top 3' things that went well, and how they measured success.

UPGRADING INFORMAL SETTLEMENTS: EVIDENCE BASED INTERVENTIONS

Ms Julie Boulton, Program Manager, Monash Sustainable Development Institute



PARTICIPANTS

ALEXEI TRUNDLE

DORIS SUSAU

EMRAH ENGINDENIZ

MERE NAULUMATUA

BUDDLEY RONNIE

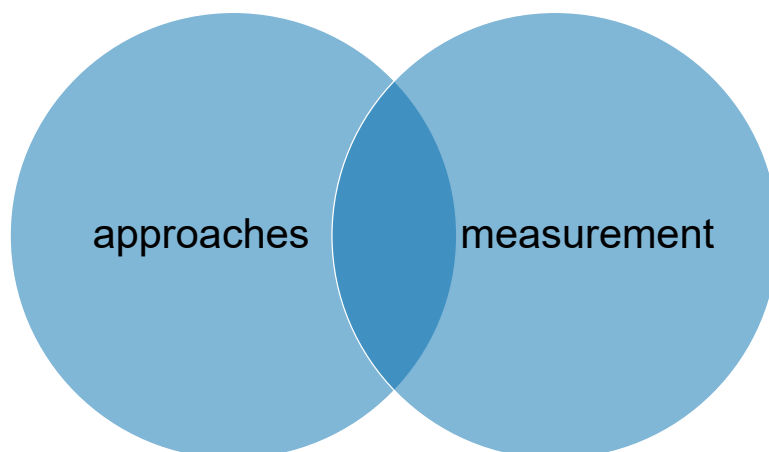
AMALIE WRIGHT

MATTHEW FRENCH

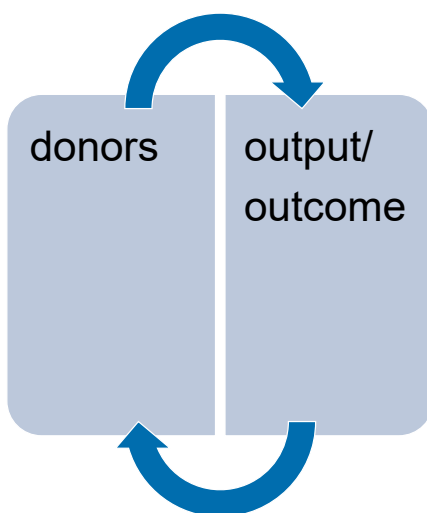


EVIDENCE BASED INTERVENTION

WHO IS DOING IT, HOW
AND WHY?



CHALLENGES




RECOMMENDATIONS FOR PUF




CLIMATE CHANGE RESILIENCE & INFORMAL SETTLEMENT UPGRADING IN PACIFIC SIDS

Mr. Alexei Trundle, PhD Candidate, University of Melbourne



Source: Alexei Trundle 2017



**Climate Change Resilience
and Informal Settlement
Upgrading in Pacific SIDS**

5th Pacific Urban Forum, Nadi

AUSTRALIAN-GERMAN
CLIMATE & ENERGY COLLEGE

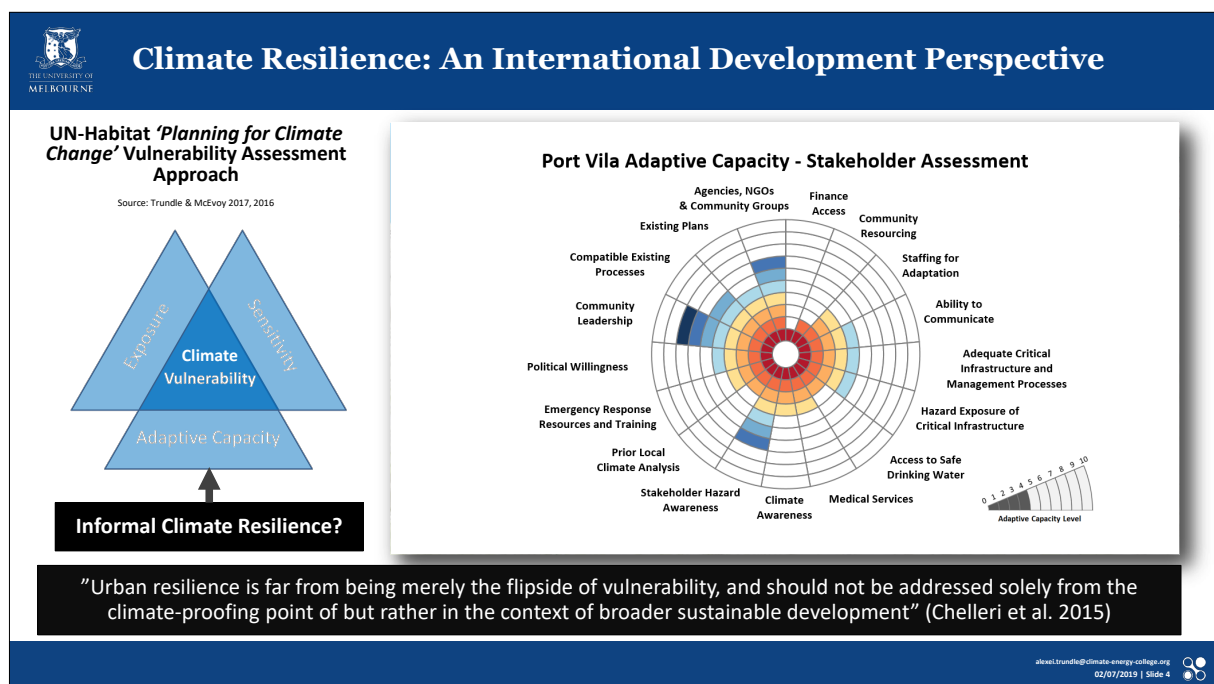
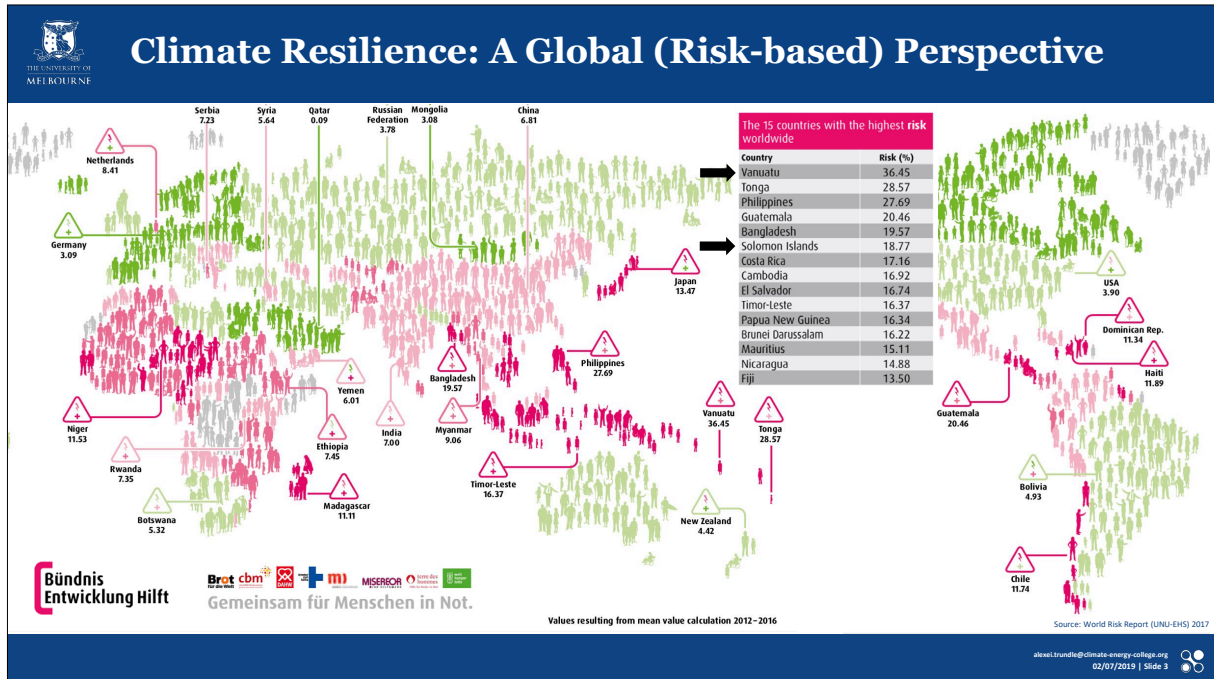


Acknowledgements:

**The communities, governments
and civil societies of Port Vila &
Honiara**

**The University of Melbourne's School of
Design, Melbourne Sustainable Society
Institute, and Climate & Energy College**

**UN-Habitat Cities & Climate Change
Initiative / Regional Office for Asia & the
Pacific**



Climate Resilience: An Informal Perspective



"First, when we first settled here, we have our stream here. And then, the Solomon Water come and then, Solomon Water come and pipe it ...when we arrive here we used to use our stream, then they take it from us." JBHH1

"before Cyclone came last time, a lot of people from Banks they were hiding in caves when the cyclone hit. So we started looking for caves too here like ... to me, I felt the cave was much safer. And we didn't hear any effects of like wind, we were just ... it was quiet inside. We got solar, we watched laptops, movies. During Pam. (ETHH3)"



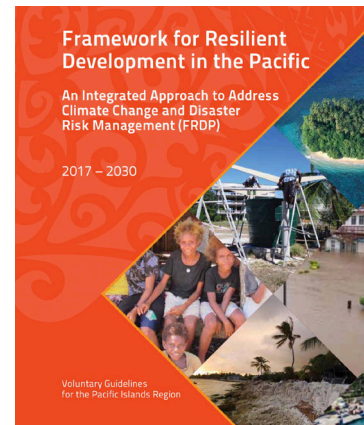
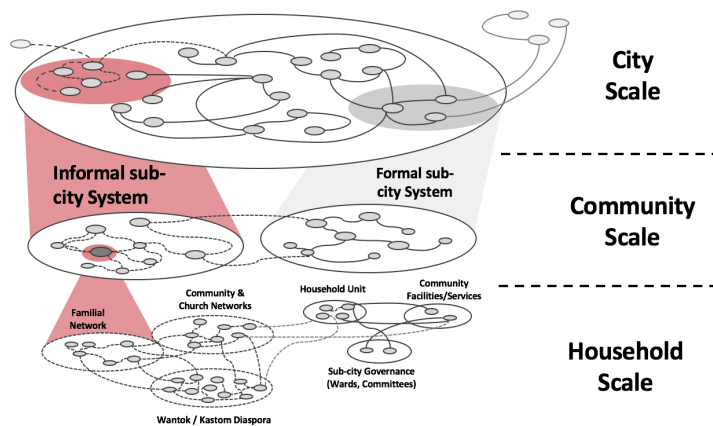
Climate Resilience: An Urban Migrant's Perspective



"But people at home, the climate change that happened, our people just relax. I don't know why. They aren't all moving away from their main inhabitation because they moved there ages ago, so they don't want to go away. But the government is trying to relocate them, bring them away. But they are not interested. Half maybe, there are times when the sea rose, that were thinking of moving away" (OJHH1)



Climate Resilience: A (Critical) Academic Perspective



“Resilience now rivals sustainability as a major organizing principle or “buzzword” for urban research and policy ... the challenge is that resilience, like sustainability, is a “fuzzy concept” that is not easily defined or measured.” - Meerow & Stults 2016

alex.trundie@climate-energy-college.org
02/07/2019 | Slide 7



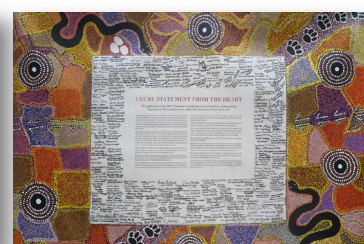
Climate Resilience: An Australian Perspective



Source: Vic Heritage Council 2017



Source: Pictures Victoria, photo – 1935 by Oswald Barnett, courtesy of Connections UnitingCare



Source: The University of Melbourne 2018



Source: SBS 2017



Source: Reuters 2014



Source: 350 Pacific/ Jeff Tan Photography



Source: Tujah 2016

alex.trundie@climate-energy-college.org
02/07/2019 | Slide 8

COMMUNITY-BASED SANITATION MARKET

Ms. Doris Susau, Live and Learn



What did we set out to do?

“There are still 2.4 billion people world-wide who do not use basic toilets” (*UN Sustainable Development Knowledge Platform*).

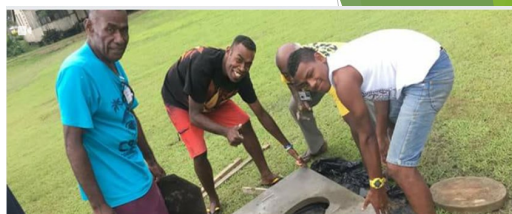
‘Ensure availability and sustainable management of water and sanitation for all’ - Sustainable Development Goal 6 (2030)

WPSMIP (Western Pacific Sanitation Marketing Innovation Program) - core strategy of the program was to develop a non-subsidized model to effectively deliver sanitation and hygiene services to peri-urban and urban communities by:

- 1) Supporting local, cooperative sanitation and hygiene entrepreneurship.
- 2) Empowering local communities to establish and sustain Community-based Sanitation Enterprises.

What worked well:

- 1) Community Interest
- 2) Partnerships
 - ▶ CSO's - People's Community Network
 - ▶ Local Government - Nasinu Town Council
 - ▶ Ministry of Health
- 3) Delivery of benefits to communities
 - ▶ Increased awareness about sanitation
 - ▶ Improved sanitation & hygiene
 - ▶ Benefits for women
 - ▶ Employment opportunities



What role did evidence play?

1) Rapid Assessment of Perceptions

- ▶ Starts from people are at
- ▶ Identifies needs
- ▶ Help inform design, implementation and monitoring of program
- ▶ Inclusive approach

2) Market Analysis

- ▶ Need
- ▶ Enabling Environment
- ▶ Ability
- ▶ Motivation & Opportunity
- ▶ Products & Services



Buddley Ronnie, Solomon Islands Ministry of Lands, Housing & Survey

Partnership and Participation in Upgrading Informal Settlement - Solomon Islands Experience

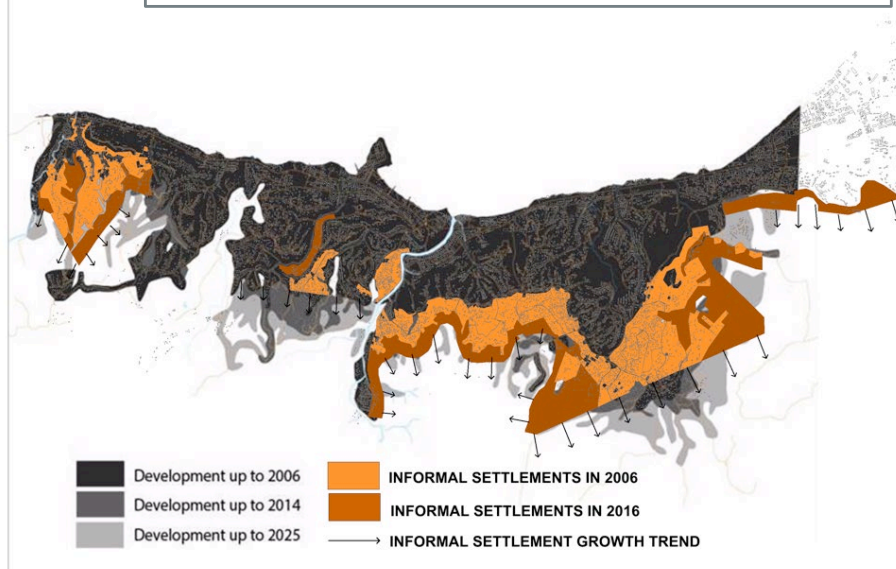


Major Stakeholders in Partnership Approach

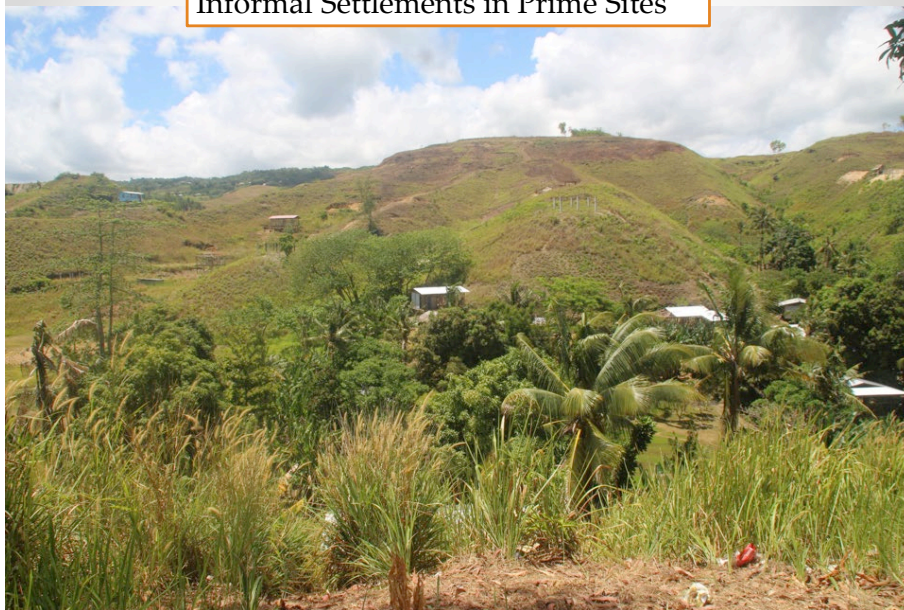
Partners	Involvement
UNHABITAT PSUP	Pilot Study Area Zone 17 to 23
Secretariat of Pacific Community (SPC)	Funded subdivision design of 7 informal settlements (1,000 lots)
Ministry of Lands, Housing & Survey (MLHS)	Survey (up to titling) of 300 lots per year
Solomon Power	Provides electricity supplies
Ministry of Infrastructure Development & Utility Groups & other NGOs	Provision of road networks and utilities & saving schemes



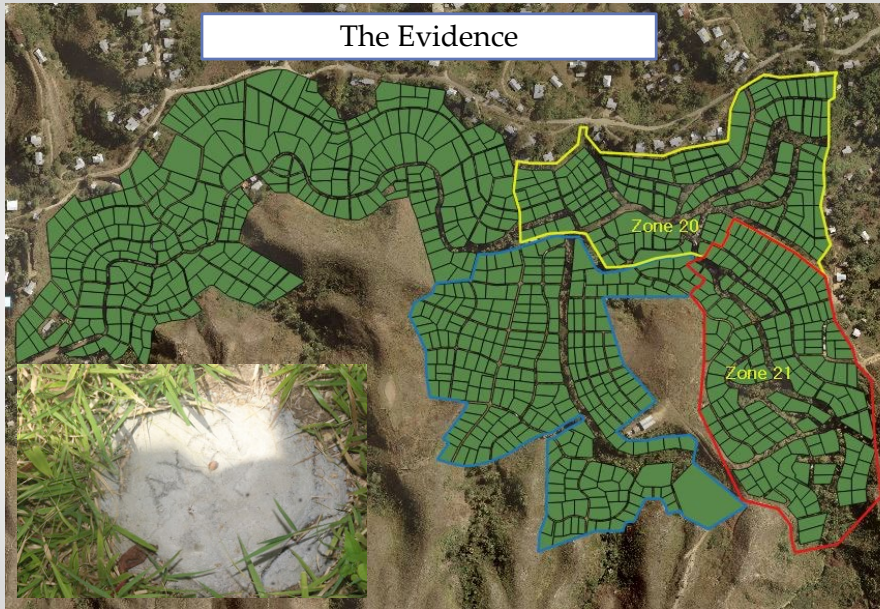
Informal Settlement Growth in Honiara



Informal Settlements in Prime Sites



The Evidence



Success factors – Residents have invested in construction of homes



Success factors – Active participation by Community Development Committees (CDC)



Success factors – Participation by community members



Success factors – Involvement of church groups



RISE

Mr. Matthew French, Program Manager, RISE program



The issue

- 1 billion people live in urban informal settlements
- 2.3 billion people lack adequate sanitation
- >580,000 children under 5 die of diarrhea each year



Our vision

To improve human, environmental, and ecological health in informal urban settlements across the developing world through a novel approach to water management

Our approach

A middle ground between conventional trunk infrastructure and WASH



Our approach

Achieving multiple co-benefits:

Flooding | Sanitation | Water Quality | Water Sources | Productive Landscapes

Protection
from
flooding
hazards

Improving
Public
health

Improving
environmental
quality

Stormwater
harvesting &
wastewater
recycling

Alternative water
supplies & effective
use of floodplains



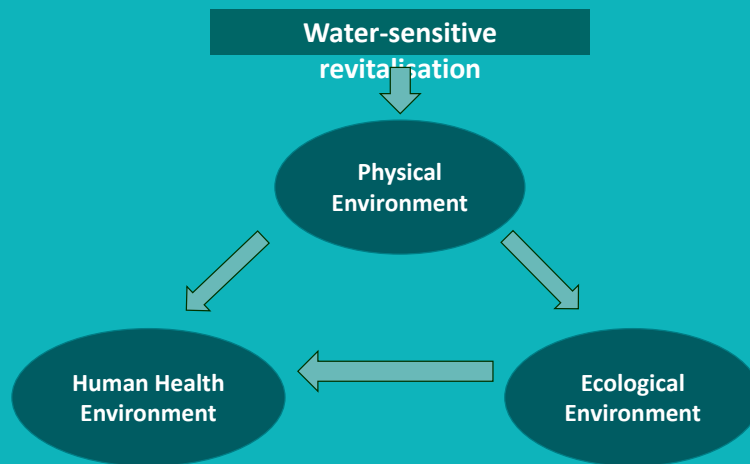


Who we are

RISE is a consortium of 150 people from 25 industry, academia, non-profit, community, and government partners.

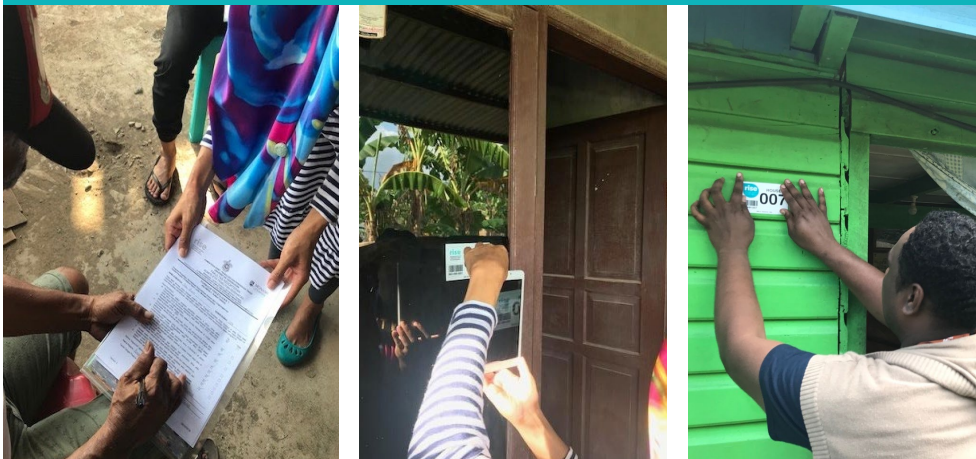
Our research aim

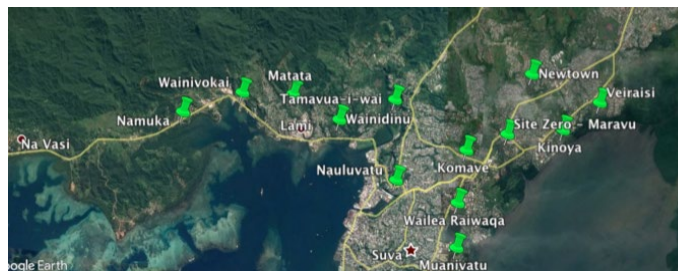
empirically test the impact of a water sensitive intervention on the environment, human health and wellbeing, and their interactions



Our research design

Randomised controlled trial (RCT) involving 24 settlements, 1,200 houses, and 7,000 people





Our philosophy

Locally anchored and implemented



Get involved

www.rise-program.org

PARTNERSHIP & PARTICIPATION

Emrah Engindeniz, Regional Programme Advisor, PSUP

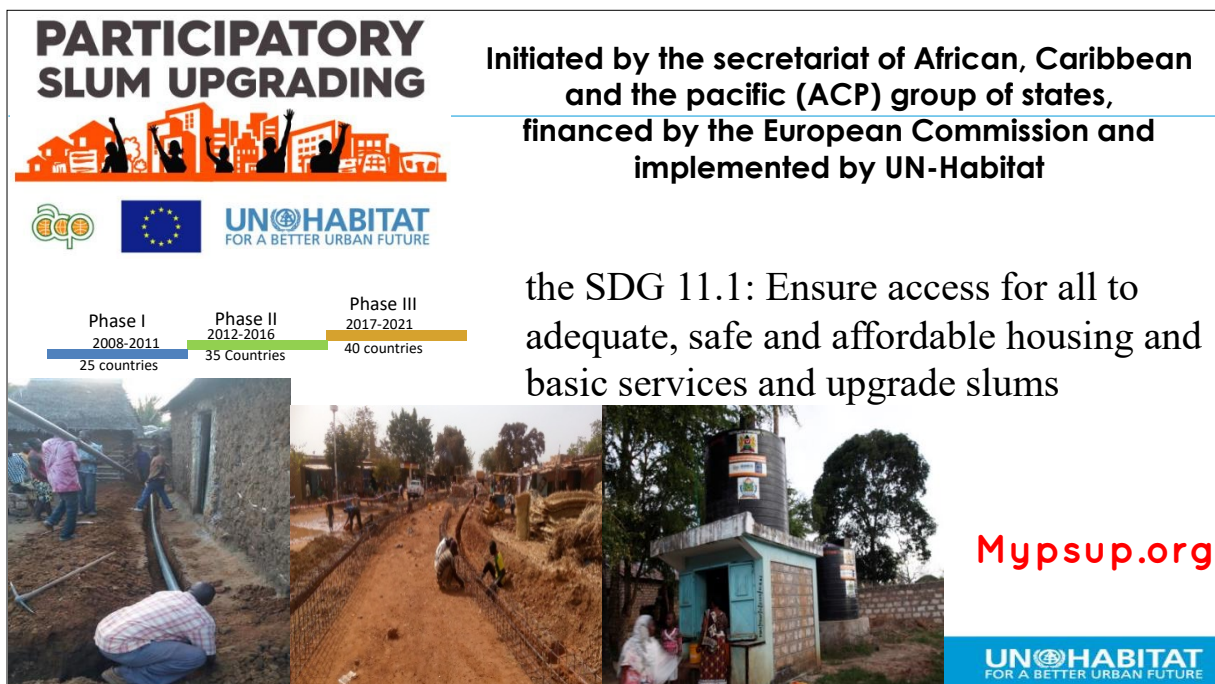


puf 5

Partnership & Participation


Emrah Engindeniz
Regional Programme Advisor
Participatory Slum Upgrading Programme (PSUP)
Emrah.Engindeniz@un.org

**PARTICIPATORY
SLUM UPGRADING**




PARTICIPATORY SLUM UPGRADING

Initiated by the secretariat of African, Caribbean and the Pacific (ACP) group of states,
financed by the European Commission and
implemented by UN-Habitat



the SDG 11.1: Ensure access for all to adequate, safe and affordable housing and basic services and upgrade slums

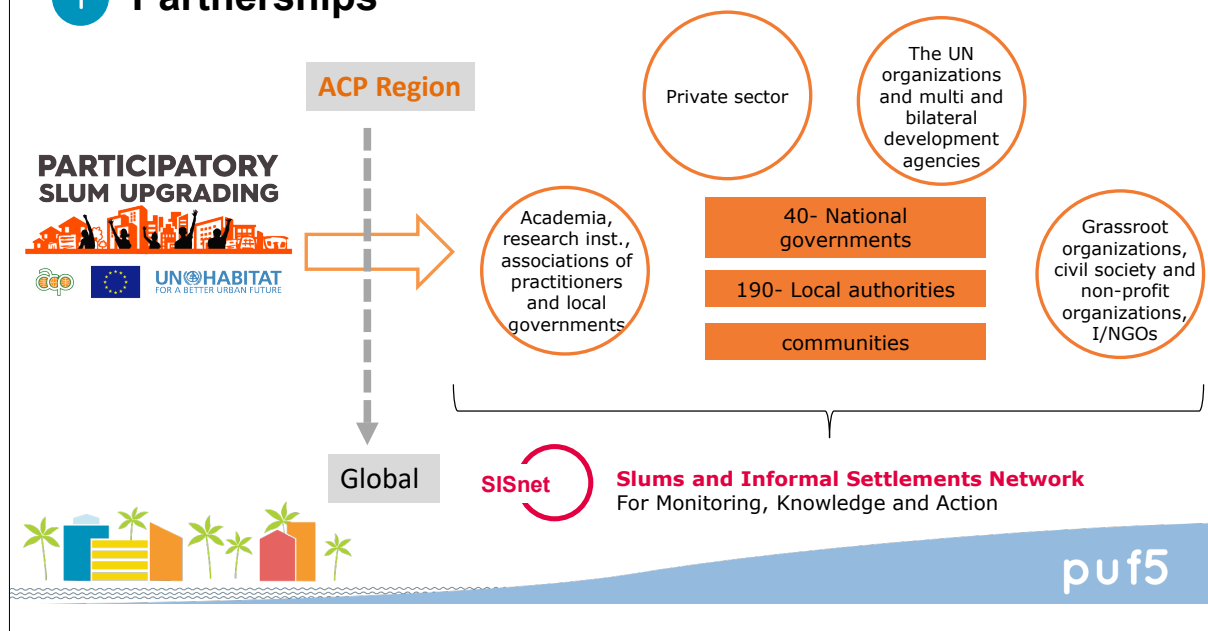
Mypsup.org



**UN-HABITAT
FOR A BETTER URBAN FUTURE**

Phase	Period	Countries
Phase I	2008-2011	25 countries
Phase II	2012-2016	35 Countries
Phase III	2017-2021	40 countries

1 Partnerships



2 Participation

Human Rights – People centered

- Engagement
- 4 Instruments



3 Participation

Country Team

- Multi-stakeholders Platform
- 40 Countries ,



Fiji



- Central government – line ministry
- Local authorities (municipalities);
- Academia (universities, research institutes and think tanks);
- External support agencies (multi and bilateral agencies, international non-governmental organizations, EUD, and UN);
- Civil society and media (private sector, non-governmental organizations, women and youth associations, media, CBOs, and the FBOs);
- Diverse Slum dweller organizations;
- Other stakeholders if need be, it depends on the necessities of each country.

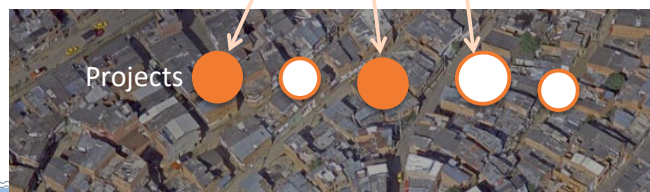
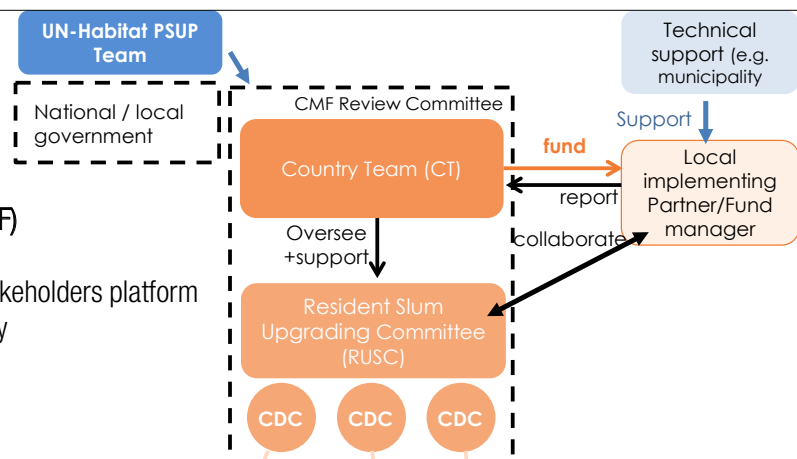
puf5

3 Participation

Community Managed Funds (CMF)

A financing facility for a multi-stakeholders platform to support community led delivery

- Trust
- Capacity building
- Engagement
- Scale-up



puf5

3 Community Managed Funds

CMF implemented in 9 African Countries

- Kenya, Ghana, Senegal, Niger, Burkina-Faso, Cameroon, Malawi, Mozambique and DRC

GHANA: the Accra Municipal Assembly (AMA) + National Ministry and UN-Habitat.

- Gha-Mashia Development Community (GDC)
- CMF becomes a revolving funds to promote livelihood generating activities while financing for community led physical projects to upgrade the neighborhood



Community fund



Local labour for priority interventions



puf5

3 GHANA :Community Managed Funds

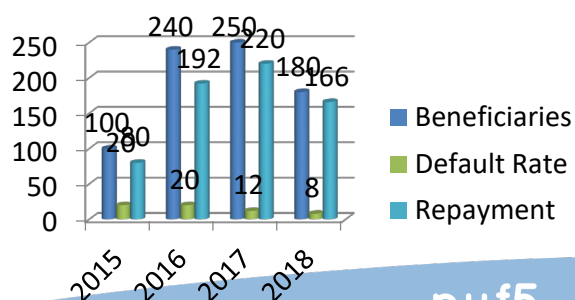
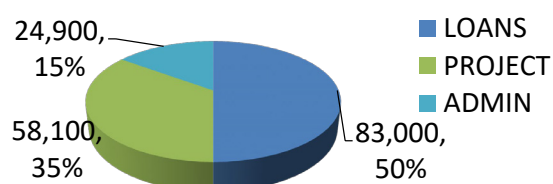
Community Development Committee (GDC)

- 800 loans for informal small scale business with 4000 indirect beneficiaries of the lending facility.

- Interest charged: 20% flat rate
- Method of Repayment: daily or weekly
- Repayment schedule: 4 to 6 months

GN Bank to partner the GDC to manage the CMF for:

- Technical back stopping
- To open a branch within the Ga-mashie community
- To recruit community members to collect monies on behalf of the GDC



puf5



@PUF2019



Pacific Urban Platform



pacific_urban_forum



<http://www.fukuoka.unhabitat.org/info/news/puf.html>

